

**Coming Soon!**



### Networkfleet's AT-1400

Networkfleet's AT-1400 provides reliable, battery powered tracking for your fixed and movable fleet assets.

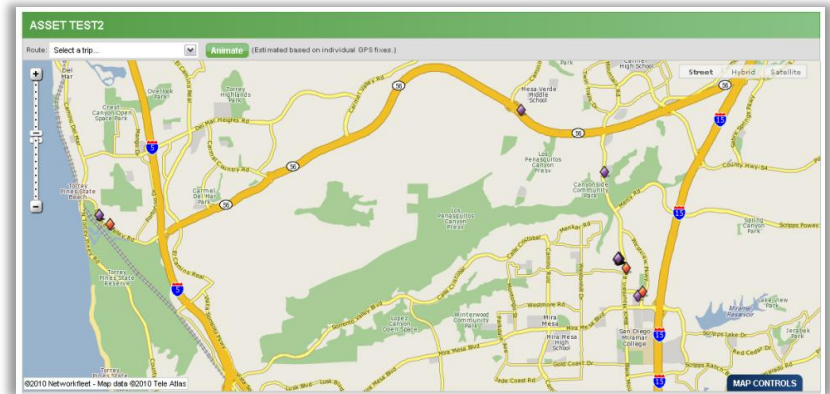
- Designed for monitoring assets such as: trailers, sheds, generators, and heavy equipment
- Reports location and movement of assets
- Configurable update rates and field replaceable battery
- Battery life lasts up to 6 years or 2,200 messages
- Industrial grade design and hardened sealed enclosures allow for functionality in extreme environmental conditions
- SAE J1455 and IP-67 compliant



#### Online Features

AT-1400 equipped assets fit seamlessly into Networkfleet's existing online application including mapping, dashboards, lists, reports, and alerts.

- AT 1400 units appear on maps alongside the remainder of your fleet (diamond icons identify assets).
- Driving Directions and "Closest To" capability can be used with AT-1400 equipped assets
- The following reports and alerts can include the AT-1400 assets:
  - Activity Detail
  - Activity Alerts
  - Geofence Violation
  - Odd Hours/Movement
  - Landmark by Landmark
  - Landmark by Vehicle



#### Configuration Options

The AT-1400 comes out of the box with a base configuration (listed below); however the configuration may be changed over the air by Networkfleet's Customer Care department. The AT-1400's configuration options include:

Configuration Options	Regular Location Update Frequency	Location Update on Movement	Location Update on Stop	Location Update Frequency while Moving
1 (Base)	Once every day	Yes	Yes	60 minutes
2	Once every day	Yes	Yes	15 minutes
3	Once every day	Yes	Yes	NA
4	Once every day	No	No	NA
5	Once every 2 days	Yes	Yes	60 minutes
6	Once every 2 days	Yes	Yes	15 minutes
7	Once every 2 days	No	No	NA

Choosing a configuration with less reporting will increase battery life but will decrease the number of data points. Choosing a configuration with more reporting will allow more location analysis, but will decrease battery life.

**For questions or additional information on the AT-1400, please contact Sullivan Communications at 205.988.5522 or email us at [terri@sullivancomm.com](mailto:terri@sullivancomm.com).**